

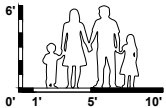
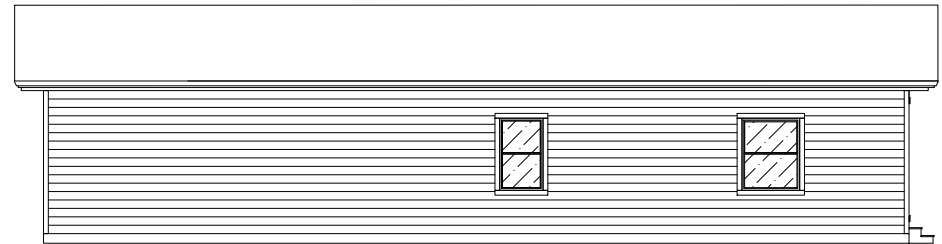
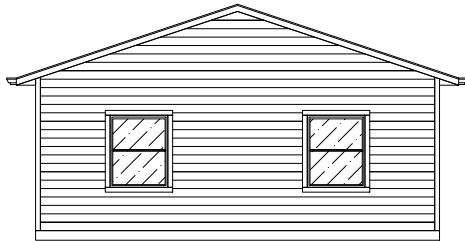
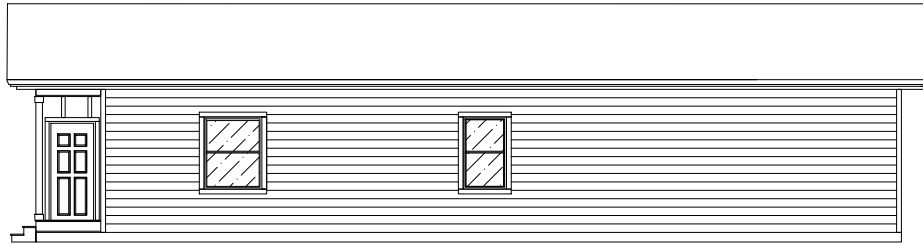
IMPORTANT DISCLAIMERS & INFORMATION:

© COPYRIGHT 2024, BY BILTWISE STRUCTURES, LLC. - ALL RIGHTS RESERVED. THIS PLAN SET, DESIGNS, SYSTEMS & CONCEPTS ARE COPYRIGHT PROTECTED, & MAY NOT BE RECREATED OR ANY ITERATIONS MADE WITHOUT EXPRESS WRITTEN PERMISSION.

This plan set is a conceptual representation of the model and its available iterations, and does not constitute a contract in any manner. This model may be built in its presented orientation, or as a reverse of this plan set. Finished product may deviate slightly from this plan set as required materials are sourced and substituted. Finished product is factory certified by a nationally authorized 3rd party inspection organization and engineered according to its intended delivery state to the approved International Residential Code and other local requirements. Other requirements for completion of unit on site may include but are not limited to delivery, setting, civil engineering, foundation plans, MEP hookups, HVAC installation, other site work requirements, and final inspections for certificate of occupancy.

FLOORPLAN	1522 SF	MODEL	2BR PR UNIT A-B
PORCH	62 SF	STYLE	FLOORPLAN
2ND STORY	0 SF	VERSION	2024.01.14
TOTAL	1584 SF	WEB	BiltWiseStructures.com





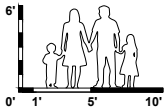
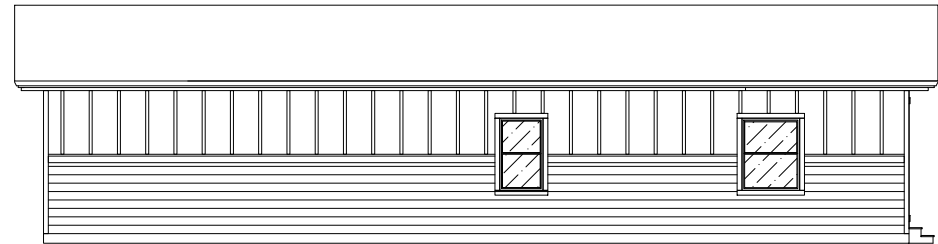
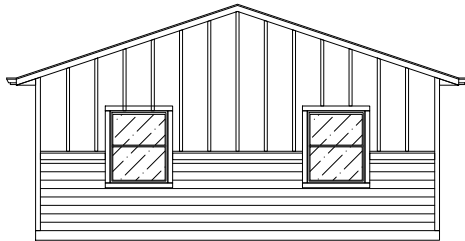
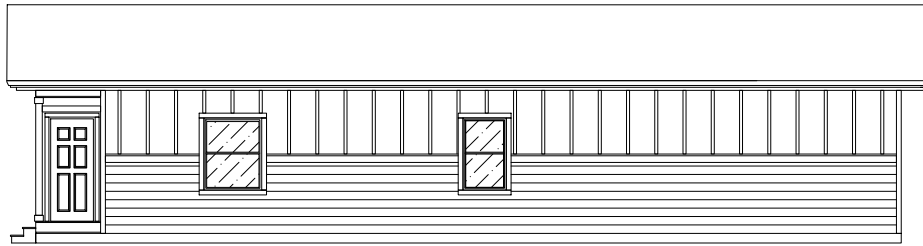
IMPORTANT DISCLAIMERS & INFORMATION:

© COPYRIGHT 2024, BY BILTWISE STRUCTURES, LLC. - ALL RIGHTS RESERVED. THIS PLAN SET, DESIGNS, SYSTEMS & CONCEPTS ARE COPYRIGHT PROTECTED, & MAY NOT BE RECREATED OR ANY ITERATIONS MADE WITHOUT EXPRESS WRITTEN PERMISSION.

This plan set is a conceptual representation of the model and its available iterations, and does not constitute a contract in any manner. This model may be built in its presented orientation, or as a reverse of this plan set. Finished product may deviate slightly from this plan set as required materials are sourced and substituted. Finished product is factory certified by a nationally authorized 3rd party inspection organization and engineered according to its intended delivery state to the approved International Residential Code and other local requirements. Other requirements for completion of unit on site may include but are not limited to delivery, setting, civil engineering, foundation plans, MEP hookups, HVAC installation, other site work requirements, and final inspections for certificate of occupancy.

FLOORPLAN	1522 SF	MODEL	TYPE A
PORCH	62 SF	STYLE	BASIC OUTLINE
2ND STORY	0 SF	VERSION	2024.01.14
TOTAL	1584 SF	WEB	BitWiseStructures.com





IMPORTANT DISCLAIMERS & INFORMATION:

© COPYRIGHT 2024, BY BILTWISE STRUCTURES, LLC. - ALL RIGHTS RESERVED. THIS PLAN SET, DESIGNS, SYSTEMS & CONCEPTS ARE COPYRIGHT PROTECTED, & MAY NOT BE RECREATED OR ANY ITERATIONS MADE WITHOUT EXPRESS WRITTEN PERMISSION.

This plan set is a conceptual representation of the model and its available iterations, and does not constitute a contract in any manner. This model may be built in its presented orientation, or as a reverse of this plan set. Finished product may deviate slightly from this plan set as required materials are sourced and substituted. Finished product is factory certified by a nationally authorized 3rd party inspection organization and engineered according to its intended delivery state to the approved International Residential Code and other local requirements. Other requirements for completion of unit on site may include but are not limited to delivery, setting, civil engineering, foundation plans, MEP hookups, HVAC installation, other site work requirements, and final inspections for certificate of occupancy.

FLOORPLAN

MODEL

TYPE B

PORCH

STYLE

BASIC OUTLINE

2ND STORY

VERSION

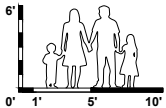
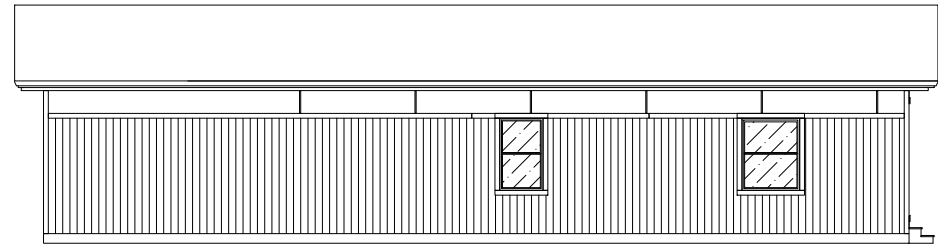
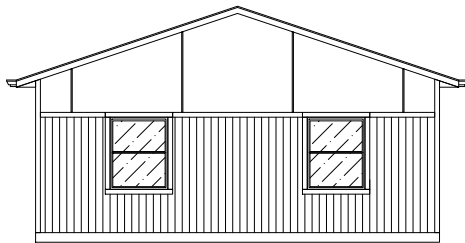
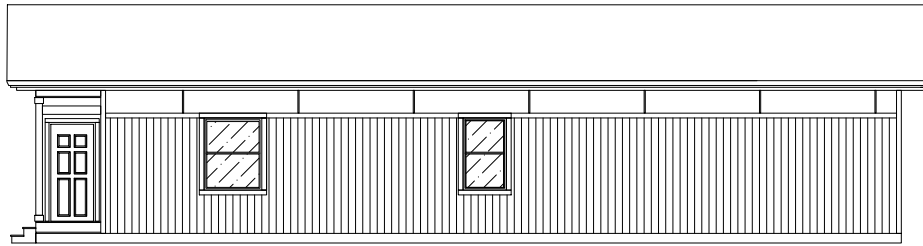
2024.01.14

TOTAL

WEB

BitWiseStructures.com





IMPORTANT DISCLAIMERS & INFORMATION:

© COPYRIGHT 2024, BY BILTWISE STRUCTURES, LLC. - ALL RIGHTS RESERVED. THIS PLAN SET, DESIGNS, SYSTEMS & CONCEPTS ARE COPYRIGHT PROTECTED, & MAY NOT BE RECREATED OR ANY ITERATIONS MADE WITHOUT EXPRESS WRITTEN PERMISSION.

This plan set is a conceptual representation of the model and its available iterations, and does not constitute a contract in any manner. This model may be built in its presented orientation, or as a reverse of this plan set. Finished product may deviate slightly from this plan set as required materials are sourced and substituted. Finished product is factory certified by a nationally authorized 3rd party inspection organization and engineered according to its intended delivery state to the approved International Residential Code and other local requirements. Other requirements for completion of unit on site may include but are not limited to delivery, setting, civil engineering, foundation plans, MEP hookups, HVAC installation, other site work requirements, and final inspections for certificate of occupancy.

FLOORPLAN	MODEL	TYPE C
PORCH	STYLE	BASIC OUTLINE
2ND STORY	VERSION	2024.01.14
TOTAL	WEB	BitWiseStructures.com

