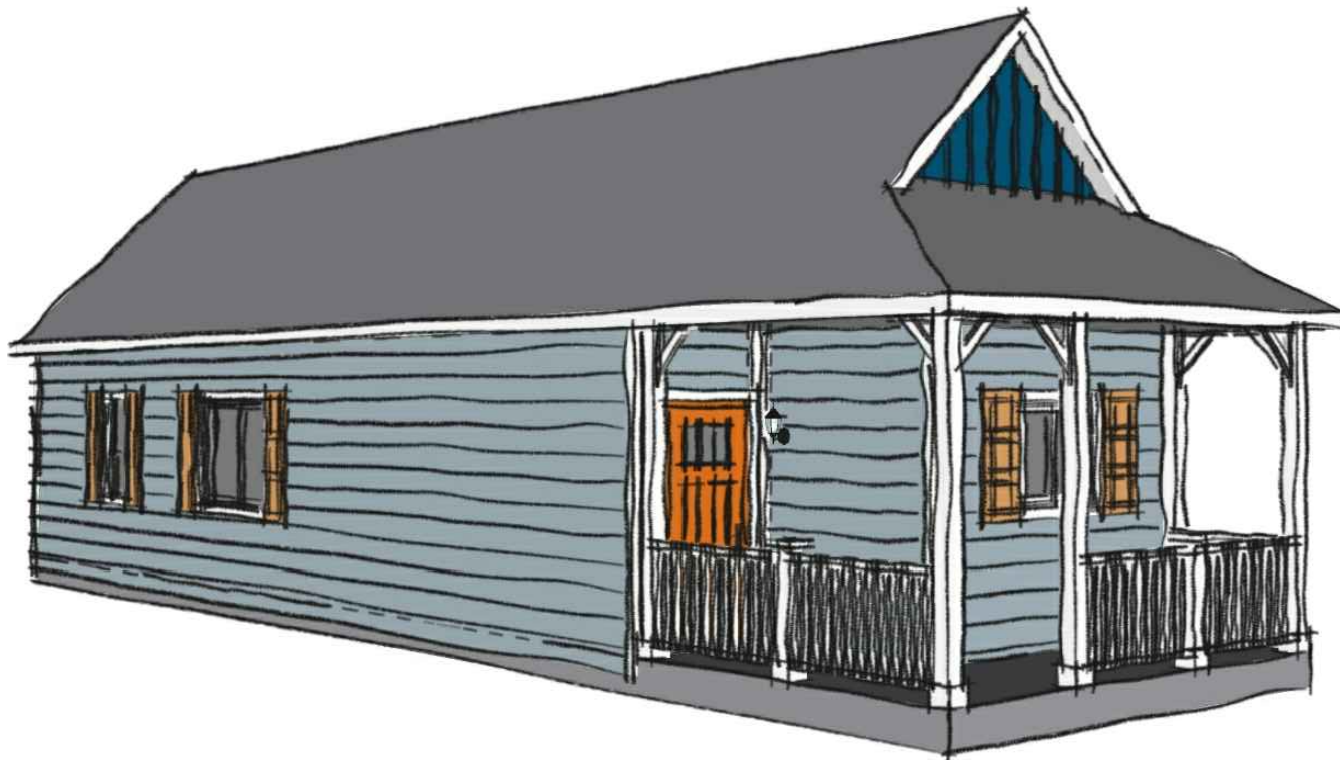


the  
**STOCKBRIDGE**

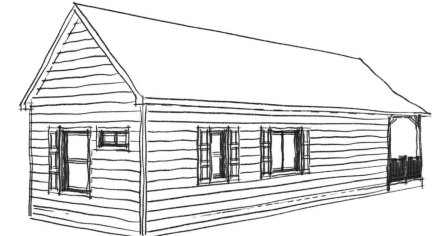
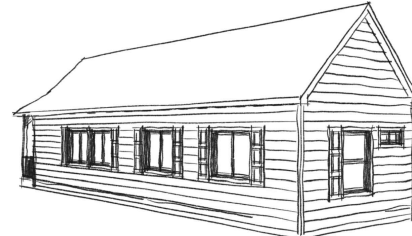
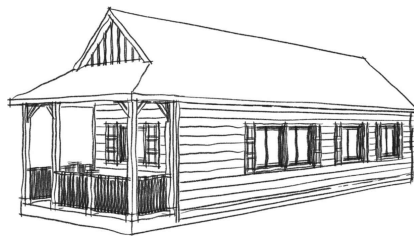
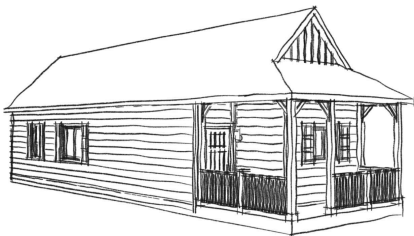
Model presented by  
BiltWise Structures, LLC



The Stockbridge is a classic shotgun style home reminiscent of architecture of the 1950s. The front porch elevation makes for nice curb appeal, as the floorplan is well configured for a narrow and small lot, or ideal as an accessory dwelling unit. The standard configuration of a 12/12 pitch roof allows for a storage loft above a bedroom for extra space. Optionally, the roof can be made with a standard 4/12 pitch to eliminate any additional site work on setting the roof.

**FEATURES:**

- 2 bed / 1 bath
- Attractive front porch
- U-shaped efficient kitchen
- Storage loft area

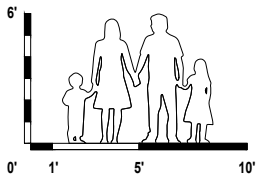
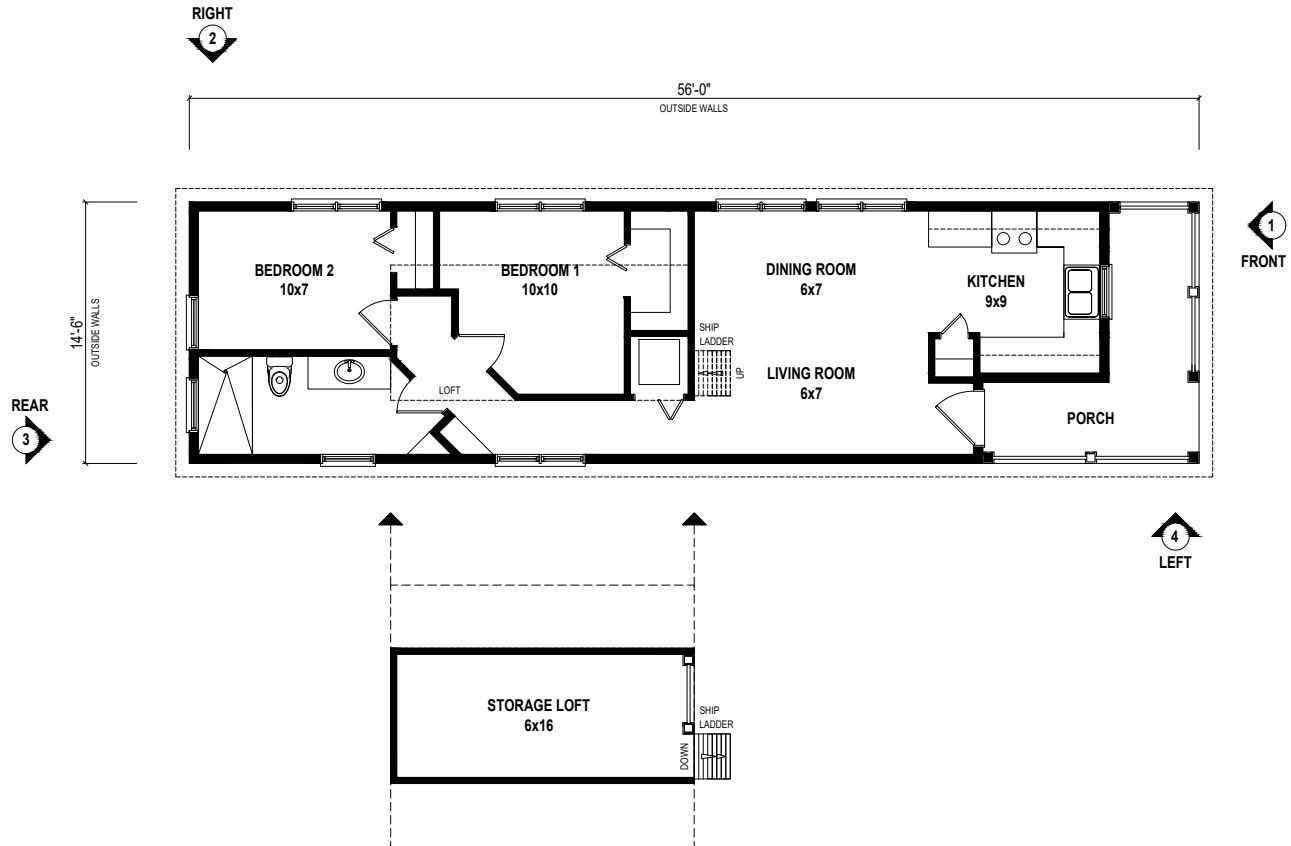


**IMPORTANT DISCLAIMERS & INFORMATION:**

© COPYRIGHT 2023, BY BILTWISE STRUCTURES, LLC. - ALL RIGHTS RESERVED. THIS PLAN SET, DESIGNS, SYSTEMS & CONCEPTS ARE COPYRIGHT PROTECTED, & MAY NOT BE RECREATED OR ANY ITERATIONS MADE WITHOUT EXPRESS WRITTEN PERMISSION.

This plan set is a conceptual representation of the model and its available iterations, and does not constitute a contract in any manner. This model may be built in its presented orientation, or as a reverse of this plan set. Finished product may deviate slightly from this plan set as required materials are sourced and substituted. Finished product is factory certified by a nationally authorized 3rd party inspection organization and engineered according to its intended delivery state to the approved International Residential Code and other local requirements. Other requirements for completion of unit on site may include but are not limited to delivery, setting, civil engineering, foundation plans, MEP hookups, HVAC installation, other site work requirements, and final inspections for certificate of occupancy.

<b>FLOORPLAN</b>	645 SF	<b>MODEL</b>	STOCKBRIDGE
<b>PORCH</b>	104 SF	<b>STYLE</b>	3D EXAMPLE
<b>LOFT</b>	112 SF	<b>VERSION</b>	2023.10.16
<b>TOTAL</b>	861 SF	<b>WEB</b>	BiltWiseStructures.com



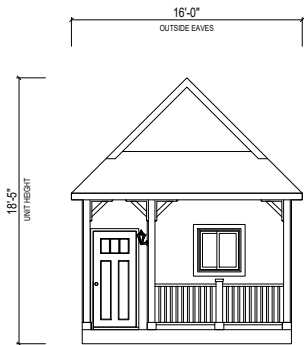
**IMPORTANT DISCLAIMERS & INFORMATION:**

© COPYRIGHT 2023, BY Z,INC. - ALL RIGHTS RESERVED. THIS PLAN SET, DESIGNS, SYSTEMS & CONCEPTS ARE COPYRIGHT PROTECTED, & MAY NOT BE RECREATED OR ANY ITERATIONS MADE WITHOUT EXPRESS WRITTEN PERMISSION.

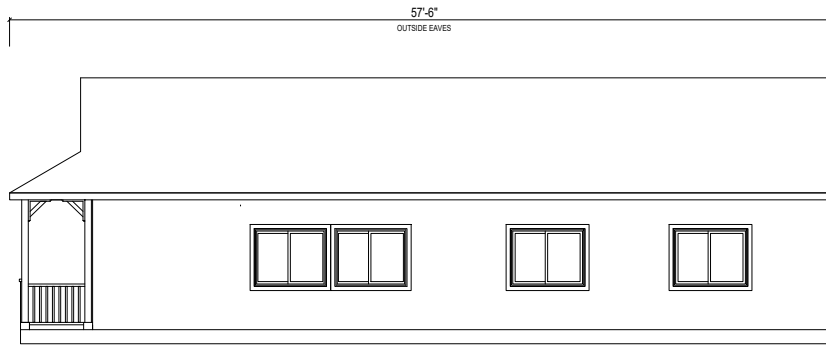
This plan set is a conceptual representation of the model and its available iterations, and does not constitute a contract in any manner. This model may be built in its presented orientation, or as a reverse of this plan set. Finished product may deviate slightly from this plan set as required materials are sourced and substituted. Finished product is factory certified by a nationally authorized 3rd party inspection organization and engineered according to its intended delivery state to the approved International Residential Code and other local requirements. Other requirements for completion of unit on site may include but are not limited to delivery, setting, civil engineering, foundation plans, MEP hookups, HVAC installation, other site work requirements, and final inspections for certificate of occupancy.

<b>FLOORPLAN</b>	645 SF	<b>MODEL</b>	STOCKBRIDGE
<b>PORCH</b>	104 SF	<b>STYLE</b>	FLOORPLAN
<b>LOFT</b>	112 SF	<b>VERSION</b>	2023.10.16
<b>TOTAL</b>	861 SF	<b>WEB</b>	BitWiseStructures.com

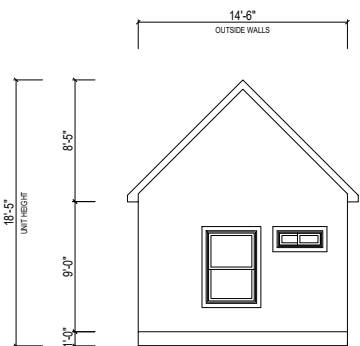




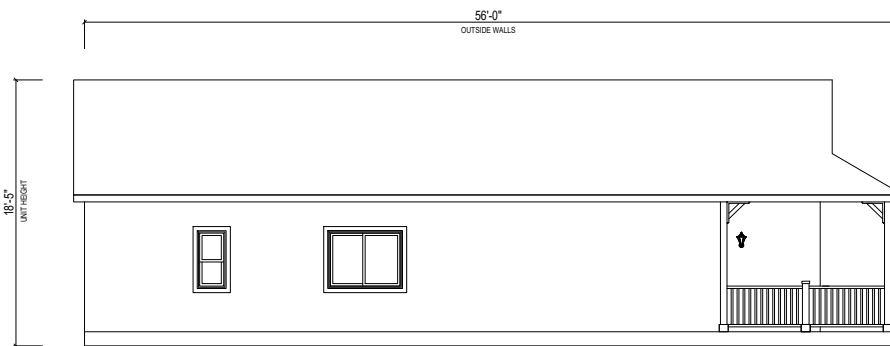
FRONT 1



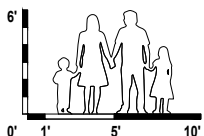
RIGHT 2



REAR 3



LEFT 4



**IMPORTANT DISCLAIMERS & INFORMATION:**

© COPYRIGHT 2023, BY BILTWISE STRUCTURES, LLC. - ALL RIGHTS RESERVED. THIS PLAN SET, DESIGNS, SYSTEMS & CONCEPTS ARE COPYRIGHT PROTECTED, & MAY NOT BE RECREATED OR ANY ITERATIONS MADE WITHOUT EXPRESS WRITTEN PERMISSION.

This plan set is a conceptual representation of the model and its available iterations, and does not constitute a contract in any manner. This model may be built in its presented orientation, or as a reverse of this plan set. Finished product may deviate slightly from this plan set as required materials are sourced and substituted. Finished product is factory certified by a nationally authorized 3rd party inspection organization and engineered according to its intended delivery state to the approved International Residential Code and other local requirements. Other requirements for completion of unit on site may include but are not limited to delivery, setting, civil engineering, foundation plans, MEP hookups, HVAC installation, other site work requirements, and final inspections for certificate of occupancy.

<b>FLOORPLAN</b>	645 SF	<b>MODEL</b>	STOCKBRIDGE
<b>PORCH</b>	104 SF	<b>STYLE</b>	BASIC OUTLINE
<b>LOFT</b>	112 SF	<b>VERSION</b>	2023.10.18
<b>TOTAL</b>	861 SF	<b>WEB</b>	BitWiseStructures.com

